



Condensate Sensor MS

Application

The condensate sensor **MS** is used for continuous extractive gas analytics. It is usually integrated downstream the sample gas cooler and serves for detection of humidity and condensate break through within a gas analysis system.

Technology

The condensate sensor is mounted in a flow chamber made of corrosion resistant PVDF and has two densely packed long-lasting corrosion resistant Platinum contacts, electrically conductive connected already due to minimal condensate quantities. Via connected optional electronic control **EC72.01** then a signal is transmitted. The PVDF sample gas connections for hose DN4/6 are located directly at the flow chamber.

Functions

The condensate sensor **MS** reliably detects a condensate break through downstream the sample gas cooler and therefore gives an indication of an overload or defect of cooler or condensate separator. Additionally the downstream analyser is protected against breaking through condensate by e.g. switching off the sample gas pump in case of alarm via the connected electronic control **EC72.01**. This way costly downtime and high repair costs of the analyser are avoided.

- ✓ **Reliable protection of the analyser against condensate break through**
- ✓ **Safe detection of condensate**
- ✓ **Long-lasting Platinum electrodes**
- ✓ **Simple mounting and integration**
- ✓ **High chemical resistance**
- ✓ **Line break monitoring of the sensor with electronic control EC72.01**

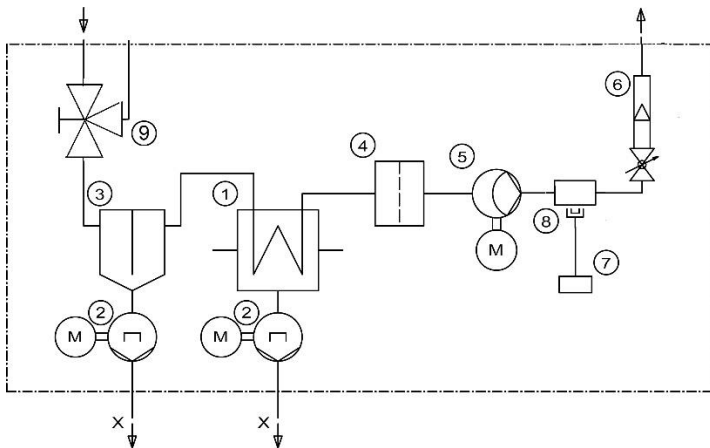




Technical Data

MS		
Part No.		8440225
Sample gas connections		DN4/6
Ambient temperature	°C	-20...+60
Max. media temperature	°C	100
Materials media wetted parts		glass, PVDF, Platinum, FPM
Max. operating pressure	bar	2,5
Max. flow rate V_n	l/h	500
Design data		
Dimensions	mm	125 x 55 x 40
Weight	kg	0,1
Mounting		wall mounting
Electrical data		
Electrode material		Platinum
Cable length	m	1,25

Application example



- ① Heat exchanger
- ② Condensate pump
- ③ Condensate pre-separator (Option)
- ④ PTFE depth filter
- ⑤ Sample gas pump
- ⑥ Flow meter
- ⑦ Electronic control
- ⑧ **Condensate sensor MS**
- ⑨ Test gas valve

Electronic control



Electronic control EC72.01, part no. 5201047 (24VDC, see also separate data sheet)